



**sustech**  
INTEGRATED SOLUTIONS

FIRM PROFILE 2022



## W H O W E A R E

Founded in 2011, **Sustech** is supported by our skilled construction managers, with over 20 years of hands-on experience in the development of industrial, commercial, institutional, and sport venues projects. Our team's diversity in education, expertise, and professional background allows us to cater to clients with a wide array of requirements, providing top-notch construction and construction management services.

Our services are enhanced with state-of-the-art technologies such as Building Information Modeling and Green Building practices, giving our clients the benefit of getting everything they need to accomplish their project goals from a single source. Our mission is to exceed our customer's expectations by providing high quality, responsive management and construction services with empowered professional employees.

### COMPANY DATA

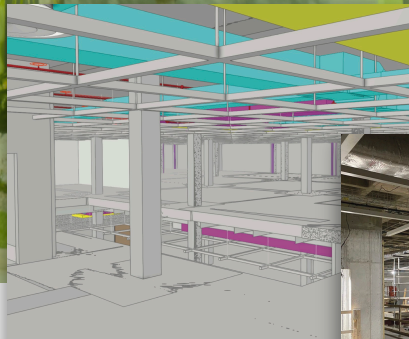
DUNS: 078398571  
CAGE: 6P6G8  
DBE: 2018-004  
SDB  
8(a)

### BONDING CAPACITY

\$20MM Single  
\$40MM Aggregate

### NAICS CODES

236220 Comm. & Inst. Bldg. Const.  
236115 New Single-Family Construction  
236116 New Multi-Family Construction  
236210 Industrial Bldg. Construction  
237990 Other Heavy & Civil Eng. Const.  
238390 Other Bldg. Finishing Contractor  
238990 All Other Spec. Trade Contractor  
541310 Architectural Services  
541330 Engineering Services  
541420 Industrial Design Services  
541620 Environmental Consulting Svc



BIM Planned

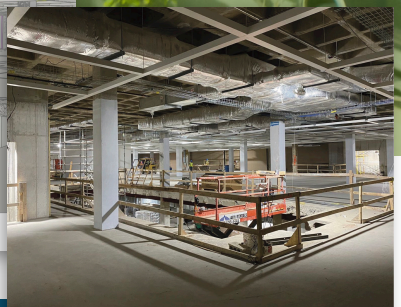


Photo May 3, 2021

## GENERAL CONSTRUCTION AND PROGRAM MANAGEMENT

- Turnkey General Construction
- Permits and Logistics
- Procurement
- Post-Construction and Inspections
- Cost Estimates and Budget Analysis
- Risk Analysis
- Contingencies Assignment
  - Fabrication
  - 5D Simulations
- Full Scope-Scheduling
- Document Control
  - Cost Control
  - Master Contract List
  - Change Management
- Value Engineering
- LLC Life Cycle Cost

## THE SUSTECH DIFFERENCE

Our clients received unsurpassed insights into their projects and can anticipate their needs, with our latest-generation tools for advanced

By applying 5D modeling, and deep technical expertise, we can produce fast-track projects that are efficient, on time and on budget with conflict resolution before the first laborer enters the job site.

See it in action:  
IKEA Puerto Rico



CLIENT  
EXPERIENCE





## C L I E N T   R E V I E W S

“Sustech was able to meet our company needs, get the building work done, and meet the deadlines which resulted in our being open in record time despite dealing with external factors that we confronted. This speaks highly of what they accomplished through teamwork.”

**Vicente Massip, Ikea Puerto Rico**

“We had the opportunity to contract Sustech for the refurbishment of our AAS FBO facility and the new storage hanger. Our experience working with the firm was very successful and the expectations were accomplished. Very professional completing the project as expected.”

**Ms. Linda Matienzo, Operations Director MGI**

“When we partnered with Sustech to build The Office project at Paseo Caribe we had very high expectations towards our finished product. I can attest to their efforts in making every detail come out perfectly and on time. Eng. Vazquez has a great team that is very professional and easy to work with.”

**Mr. Benito Rodriguez, Project Manager, CPG**



# PROJECT HIGHLIGHTS

**IKEA Puerto Rico**

Location: Bayamon, PR

Time: 9 months



**Baskin Robins, Montehiedra**

Location: San Juan, PR

Time: 3.5 months

Scope: Construction



**Hugo Boss Store**

Mall of San Juan

Client: Fashionista

Location: San Juan, PR

Scope: Construction

Time: 2 months

**Salvatore Ferragamo**

Mall of San Juan

Client: Grupo Pera

Scope: Construction



**Swarovski**

Mall of San Juan

Client: Cryslux PR

Location: San Juan, PR

Time: 2 months

Scope: Construction

**Carolina Herrera**

Mall of SJ

Client: Austral 77

Time: 4 months

Scope: Construction



**SJU - American Airlines**

Restrooms Location:

Carolina, PR

Time: 3 months

Scope: Design-Build

**American Airlines GSU**

Auto Shop

Location: Carolina, PR

Time: 3 months

Scope: Repairs

**MAPFRE Building, New Gen-Set**

Location: San Juan, PR

Time: 2 months

Scope: Construction

Completed 2019



**BPPR New Branch**

Location: Isabela, PR

Time: 6 months

Scope: Construction

**BPPR Offices**

**& Branch**

**Reconstruction**

Location: Various

Scope: Construction



**BPPR Plazoleta**

Location: San Juan, PR

Scope: Construction

Completed 2017

**Popular Auto**

Location: San Juan, PR

Time: 4 months

Scope: Construction

Completed 2018



**Empresas Fonalledas**

Pedestrian Bridge

Location: Plaza Las Americas

Scope: Fabrication/Installation

**Empresas Fonalleda**

FAA Office at Plaza

Location: San Juan, PR

Scope: Repairs

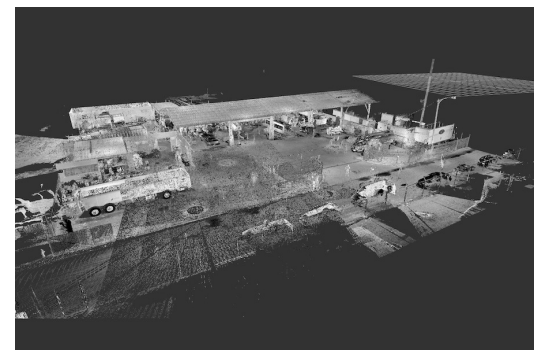
Time: 1 month



**Airport Aviation Services Motor Pool**

Location: Carolina, PR

Scope: Construction



VIEW MORE WORK:  
[SUSTECHPR.COM/WORK](http://SUSTECHPR.COM/WORK)



**sustech**  
INTEGRATED SOLUTIONS

Ángel Vázquez, P.E, M.S.  
President  
[avazquez@sustechpr.com](mailto:avazquez@sustechpr.com)

(787) 756-7641 Office  
(787) 226-9598 Mobile  
PO Box 1493,  
Trujillo Alto, PR 00977

[SUSTECHPR.COM](http://SUSTECHPR.COM)